

DRAWN FROM THE COLLECTION: highlights and hidden gems

Wall 1

(All works Collection Duldig
Studio unless otherwise
indicated)

1.

Slawa Horowitz-Duldig
Reclining figure, c.1972
pen and coloured inks,
53.0 x 35.5 cm
Inv. No. 3229



2.

Slawa Horowitz-Duldig
*Black figure in abstract
landscape*, c. 1972
coloured inks on paper,
55.5 x 38.0 cm
Inv. No 3227



3.

Slawa Horowitz-Duldig
Composition, c. 1972
coloured inks,
37.5 x 55.5 cm
Inv. No. 3225



4.

Karl Duldig
Young Love, c. 1924
Bronze (1984), 20.5 x 51.5
x 18 cm
Inv. No. 720



Area b (sides of entrance
to heritage rooms) –

5. Karl Duldig
Casandra, c. 1965
woodcut, 41.5 x 15.5 cm
Inv. No. 3232



6. Slawa-Horowitz-Duldig
Old Viennese Lady, 1922
pencil, 25.5 x 22.0 cm
Inv. No. 3220



Wall 2 - Works – Bench

7.
Karl Duldig
Mystery, 1955
marble, 46.3 x 18.0 x 15.8
cm
Inv. No. 1443



Collection Eva de Jong-
Duldig

8.

Karl Duldig

Two figures, c.1955

Limestone, 30.5 x 36.0 x
12.0 cm

Inv. No. 697



9.

Karl Duldig

Figure, date unknown
marble and alabaster,
43.0 x 75 x 80 cm

Inv. No. 235

Collection Eva de Jong-
Duldig



Work - pedestal

10. Karl Duldig

Raoul Wallenberg, 1984
terracotta, 49.0 x 24.0 x
23.0 cm

Inv. No. 1237



Works - wall

11.

Karl Duldig

Abstract face, c. 1966
woodcut on rice paper,
36.0 x 19.0 cm

Inv. No 3242

Collection Eva de Jong-
Duldig (on loan)



12.

Karl Duldig

Mother and child, 1978
pencil rubbing, 33.5 x 43.5
cm

Inv. No. 3001

Collection Eva de Jong-
Duldig (on loan)



13.

Karl Duldig

Dancing figure, c. 1968
woodcut, 56.0 x 30.5 cm
Inv. No. 3060

Collection Eva de Jong-
Duldig (on loan)



14.

Karl Duldig

Self-portrait, 1925
pencil, 29.0 x 23.3 cm
Inv. No. 3627a

Collection Eva de Jong-
Duldig (on loan)



Wall 3 Works pedestal

15.

Karl Duldig

Slawa, c. 1945

marble, 41 x 26.5 x 24.7

cm

Inv. No. 830



16.

Karl Duldig

Awakening, 1953

terracotta,

13.4 x 43.0 x 42.0 cm

Inv. No. 1444



Collection Eva de Jong-Duldig.



Wall 3 - Works - wall

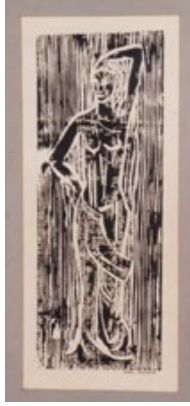
17.

Karl Duldig

Female Figure c.1969

linocut, 44.5 x 18.5 cm

Inv. No. 3013

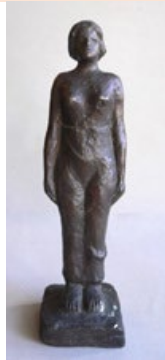


18.
Karl Duldig,
*Sketch for mother and
child*, c.1965
Wax crayon and
watercolour, 365 x 260 cm
Inv. No. 3095



Works - bench

19.
Slawa Horowitz-Duldig
Female Figure, 1940
Bronze, 25.7 x 70 x 75 cm
Inv. No. 178



20.
Karl Duldig
Draped female figure, c.
1965
Terracotta with colour
underglaze, 31.0 x 65 x 70
cm
Inv. No. 169



21.
Karl Duldig
Awakening, c. 1958
earthenware with touches
of underglaze
53.0 x 16.5 x 14.0 cm
Inv. No. 254

Collection Eva de Jong-
Duldig



22.
Karl Duldig
Female Figure, c. 1980
Earthenware,
32.5 x 11.5 x 11.0 cm
Inv. No. 179

Collection Eva de Jong-
Duldig



23.
Karl Duldig
Semi-nude female figure,
c. 1965
Earthenware, partly glazed
with clear glaze over,
39.7 x 13.4 x 15.0 cm
Inv. No. 450

Collection Eva de Jong-
Duldig



Wall 4
Pedestal (corner)

24.

Karl Duldig
Singapore Head

c. 1940

earthenware, paint, 22.5 x
13.9 x 17.5 cm

Inv. No. 1632



25.

Karl Duldig
Self-portrait, c. 1976

pen and ink, 27.8 x 19.2
cm

Inv. No. 3651



Cabinet

26.

Slawa Horowitz- Duldig,
Mask (Self-portrait), c.

1922, plaster

230 x 170 x 75 cm

Inv. No. 1432



Collection Eva de Jong-
Duldig

27.

Slawa Horowitz-Duldig
*Umbrella prototype and
cover*, c. 1930

steel, fabric, bakelite,
cotton cord

Inv. No. 8030

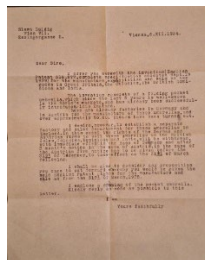


28.

Slawa Duldig
*Letter to manufacturers
Wright, Bindley and Gell
Ltd. of Birmingham*, 6

December 1934,

Inv. No. 7017.2

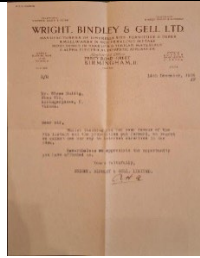


29.

Wright, Bindley and Gell,
Limited

Letter to Slawa Duldig, 14
December, 1934

Inv. No. 7017.3



30.

Slawa Horowitz-Duldig
Card for Kosmetic Institut,
Wien (Cosmetic Institute,
Vienna), c. 1932

Inv. No. 3304



31.

Printing blocks for Card for
Cosmetic Institute,
Vienna, c.1932

Inv. No.8100;

Inv. No. 8101

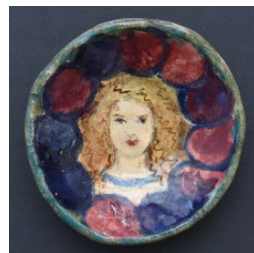


32.

Karl Duldig and Slawa
Horowitz-Duldig, *Bowl*, c.
1950

Glazed earthenware, 30 x
130 x 110 cm

Inv. No. 1286



Collection Eva de Jong-
Duldig

33.

Karl Duldig
*Maquette for Hakoah
monument, c. 1967*
bronze, 56.7 x 16.8 x 20.1
cm
Inv. No. 336



Wall 5 – works wall

34.

Karl Duldig
*Sketch for Holocaust
memorial, c.1962,*
charcoal on cardboard,
38.2 x 70.4 cm
Inv. No. 3054



35.

Karl Duldig
*Sketch for Holocaust
memorial, c.1962,*
charcoal on cardboard,
36.5 x 67.5 cm
Inv. No. 3097



Corner of wall 5 - pedestal

36.

Karl Duldig
Kneeling girl, c. 1977
Terracotta,
450 x 200 x 255 cm
Inv. No. 345



Collection Eva de Jong-
Duldig

