



**DULDIG  
STUDIO**

museum + sculpture garden

**ANNUAL REVIEW 2023**

**The Duldig Gallery Inc**

Inspiring Creative Journeys



Located at 92 Burke Rd, Malvern East, the Duldig Gallery Inc. t/a Duldig Studio is a not-for-profit registered tax-deductible gift recipient public museum and art gallery.

We wish to acknowledge the custodians of this land, the Boonwurrung People of the Kulin Nation and their Elders past and present. We acknowledge and respect their continuing culture and the contribution they make to the life of this city and region.

## ANNUAL REPORT 2023

### CONTENTS

<b>INTRODUCTION</b>	
President's Report <i>Janine Kibblewhite</i>	6
Museum Manager's Report <i>Kate Prinsley</i>	8
Volunteer Coordinator's Report <i>Wendy Hughes Chuck</i>	11
Studio Activities 2022 - 2023	13
<b>FOUNDER</b>	
Founder's Message <i>Eva de Jong-Duldig</i>	14
<b>BOARD</b>	
Board of Management Report	16
<b>SUPPORTERS</b>	
Donors, Founding Patron, Life Members and Bequests	20
<b>PARTNERS</b>	
Funding, Community and Industry Partners	21

NOTE: Financial Report is available on request.

### PEOPLE

**Founder & Patron** *Eva de Jong-Duldig*  
**President** *Janine Kibblewhite*  
**Vice President** *Gina Panebianco*  
**Treasurer** *Antony de Jong*  
**Secretary** *Angela James*  
**Board Member** *Andrew Dixon*  
**Museum Manager** *Kate Prinsley*  
**Bookkeeper** *Jane Tisdall*

**Collection & Facilities Manager**  
*Stefan Damschke*  
**Programs & Marketing Coordinator**  
*Jess Murray*  
**Volunteer Coordinator**  
*Wendy Hughes Chuck*  
**Curatorial & Research Associate**  
*Melinda Mockridge*

**The Duldig Gallery Inc.**  
 PO Box 182, Glen Iris, Victoria 3146, Australia  
 Tel: +61 3 9885 3358  
 Email: [enquiries@duldig.org.au](mailto:enquiries@duldig.org.au)  
 ABN 69 467 549 145

 [www.duldig.org.au](http://www.duldig.org.au)

 [@duldigstudio](https://www.facebook.com/duldigstudio)

 [@duldigstudio\\_museum](https://www.instagram.com/duldigstudio_museum)

*Cover Image*  
 Inside the Artists' studio

*Image P4*  
 Children having fun decorating cookies at our annual Umbrella Day family celebrations

*Image left*  
 Interior original entrance hall, 92 Burke Road (detail)

## VISION

To be recognised as a pre-eminent Australian artists' house museum that inspires, informs and engages through art and the story of the Duldig family's creative journey.

## MISSION STATEMENT

To preserve, interpret and make publicly accessible an in situ collection and associated memories of the life and work of Karl Duldig and Slawa Horowitz-Duldig, in a culturally and historically relevant manner.



## PRESIDENT'S REPORT

Janine Kibblewhite



The Duldig Studio is a public museum that was established in 2002 to provide universal access to the nationally significant educational, cultural, historical and artistic resources comprising the Duldig collection. The Duldig Studio is committed to providing a unique and intimate approach to art as a lived experience in an authentic historical setting. Our programs and activities inspire creative journeys for visitors of all ages and backgrounds.

I would like to commence this report by recognising and thanking all our volunteers and Board members for their collaboration and great individual support of the Duldig Studio's programs and activities to help make the organisation stronger and more resilient. Our Board members all volunteer their services and expertise to the Duldig Studio. They play a key role in all activities via subcommittees and hands-on operational support, projects and working groups and bring considerable professional experience and skills. Their knowledge and dedication is key to our ongoing organisational capability and sustainability. I am most grateful for Vice President Gina Panebianco stepping in as co-manager with myself for several months while we recruited a new Museum Manager. Her professionalism, knowledge and dedication are inspirational and have enabled us to deliver such enriching and engaging programs.

There were several changes to our Board following on from the October 2022 AGM. Founding member and President of 20 years, Antony de Jong, stepped down as President. Under Antony's leadership, the organisation has grown and strengthened, and successfully transitioned from a family organisation to a public museum. I was honoured to accept the role of President, and look forward to continuing along the path that Antony and the Board have forged. Long-time Board member Trevor Ryan retired from the Board as Treasurer and our Immediate Past President, Antony de Jong, took on the role of Treasurer. Andrew Dixon stepped down as Secretary becoming a general Board member, and Angela

James assumed the role of Secretary. Georgina Walker also retired from the Board of Management. I would like to thank both Trevor and Georgina for their contributions and wish them all the best in their future endeavours. In December 2022 we welcomed incoming Museum Manager Kate Prinsley, and in March 2023 Jess Murray joined the Duldig Studio as Programs & Marketing Coordinator.

I am always amazed by what is achieved in one year by such a small team. Many of the highlights are covered in the following reports from the Museum Manager, Founder and Volunteer Coordinator.

Foremost among these was our collaborative exhibition with the Firestation Print Studio, *Collection Reflections*, which featured 24 contemporary printmakers' creative responses to the art and life of Karl Duldig and Slawa Horowitz-Duldig. The stories surrounding the Duldig Studio collection prompted artists to reflect on their own personal histories and their responses highlighted the universality and timelessness of art. The artists generously shared their art practices and inspiration through Artists' Talks. It was gratifying to see Karl and Slawa's art admired and brought to life by a new generation of artists and a new audience welcomed to the Studio.

Our education programs continued to grow this year through our partnership with Monash University Museum of Art (MUMA) with 2022 VCE Art Unit 4 Arts Industry Context classes and 2023 VCE Visual Arts Study Designs, Art Creative Practice and Art Making and Exhibiting visits. Our series of Emerging Artists' Talks developed in association with tertiary education providers and recent graduates from RMIT, Deakin University, Melbourne Polytechnic and Holmesglen Institute provided an opportunity to hear from the next generation of artists. The pinnacle of our educational programs for 2023 was our art immersion day, *Past is Present*, held at MUMA and the Duldig Studio supported by the

Gordon Darling Foundation and others. Guests were treated to presentations by contemporary artists, curators, conservators, and researchers to consider the diverse ways the past informs historical and contemporary artists' studio practice. It was a masterly conceived and delivered program which received accolades from all presenters and participants.

Our Sculpture Garden shone this year with the installation of garden lighting and the creation of a dedicated interpretive brochure launched in December at the Founder's talk, *My Father's Sculpture Garden*. The museum continued to extend access to its collection to people of all backgrounds and abilities, working with Vision Australia to develop audio descriptions of key sculptures in the Sculpture Garden, developing large text versions of exhibition labels and Sculpture Garden self-guided tour, and progressively captioning videos. Through the talents of our volunteers we also conducted guided tours and provided translations in French, German and Mandarin.

Our online presence continued post enforced Covid restrictions. Following the success of the 2021 Duldig Lecture on Sculpture and the access it provided to national and international audiences we also delivered the 2022 Duldig Lecture online with an international guest speaker, Dr Shawn Sobers from the University of West England. Dr Sobers addressed ideas and issues around the contentious topic of public monuments and contested culture through his work on the Commission for the re-display of the Colston statue in Bristol. The lecture had over 90 registrants with 40% coming from other Australian cities or overseas. The recording of Dr Sober's lecture remains a valuable resource and has already been viewed over 200 times.

This year we held two planning days with participation of Board members, staff and key volunteers to update our three year

strategic plan. Behind the scenes subcommittees were very active and our ad-hoc working groups made great progress. The Facilities and Planning working group engaged architects, survey engineers and a building designer to develop plans to renovate and extend our facilities to; increase and improve storage, enhance facilities, and open all the heritage rooms to the public. The Slawa Publication working group made great strides to finalise the content and engage a book designer with publication expected in late 2023.

On behalf of the Board, I would like to recognise and thank our Founder and Patron, Eva de Jong-Duldig, for her tireless support. The Board also appreciates the dedication and commitment of our Museum Manager Kate Prinsley, Collection & Facilities Manager Stefan Damschke, Programs & Marketing Coordinator Jess Murray, Volunteer Coordinator Wendy Hughes Chuck and Curatorial & Research Associate Melinda Mockridge. I would also like to acknowledge our many wonderful volunteers who help drive the day-to-day success of the Duldig Studio. Our volunteers give their time so generously to warmly welcome, guide and engage our visitors providing them with an unforgettable experience.

We could not achieve much of the above without significant financial support from the City of Stonnington, Gordon Darling Foundation, Stuart Leslie Foundation, Public Records Office of Victoria, Creative Partnerships Australia and private philanthropy. This financial backing, coupled with the in-kind support of members, donors and sponsors is critical to sustain the Duldig Studio and ensure a bright future.

JANINE KIBBLEWHITE  
President, Board of Management



Janine Kibblewhite (President), Eva de Jong-Duldig (Founder) and Gina Panebianco (Vice President), at the 2023 Premiere of 'Driftwood the Musical', June 2023



Gina Panebianco (Duldig Studio Vice President), Alison Leach (Stonnington Manager, Events, Arts & Culture), Liz McDowell (Firestation Print Studio Director), Janine Kibblewhite (Duldig Studio President) at the Opening of the 'Collection Reflections' Exhibition, March 2023

## MUSEUM MANAGER'S REPORT

Kate Prinsley



Imagine how excited I was to be appointed the Manager of the Duldig Studio - Museum & Sculpture Garden in December 2022. To have the opportunity to assist in the vision and passion of Eva de Jong-Duldig and the Board; by making accessible the history and relevance of the Duldig Story – its art and collections – we highlight the importance of art to build bridges, and the possibilities to embark on our own creative journeys.

I was so fortunate to inherit a beautifully mapped out annual program developed by President Janine Kibblewhite and Vice President Gina Panebianco as well as an excellent guiding program managed by Volunteer Coordinator Wendy Hughes Chuck. The expertise and warmth with which the volunteer guides lead tours throughout the house, studio and Sculpture Garden set the unique tone of education and hospitality in equal measure.

Similarly, the three-year Strategic Plan (2024-2027) developed by the Board provides a well thought out framework for forward planning and helps us to focus beyond the day to day activities of the museum.

No sooner had I started than we farewelled Elizabeth Graham, Marketing and Programs Assistant. Lizzie expanded the program of artists' talks held on Sunday afternoons and broadened our networks in the wider arts community. Lizzie is thanked for her generous contribution, and by March we had welcomed Jess Murray to the team. Jess's innate organisational skills, marketing and design talents are making an enormous impact.

A highlight of the year was our *Collections Reflections* collaboration with Firestation Print Studio – a response from 24 contemporary print makers to the works of Karl & Slawa Duldig exhibited in our gallery and accompanied by artists' talks. The project demonstrated how contemporary artists have a place in telling our story. Each

print brought new insights into the history of the Duldig family and so thoughtfully brought our story into the present.

Our art immersion day *Past is Present* was delivered with the support of the Gordon Darling Foundation. In collaboration with Monash University Museum of Art, artists including Prof Brian Martin, Indigenous Research Lab, Monash University, Penny Byrne, Artist and Conservator, Nina Sanadze, Visual Artist, Jade Bitar, Visual Arts Officer, City of Stonnington and Eva de Jong-Duldig posed the question who owns the past and how does it shape current artistic practice. A highlight was the curator's tour of the MUMA exhibition *Renee So: Provenance* with Melissa Ratliff, who provided an inquiring look at Renee So's influences from early artists, history and her current practice.

Both of these projects were devised and developed by Janine Kibblewhite, Gina Panebianco and Melinda Mockridge, Curatorial & Research Associate; their successful programming brought new audiences, fresh ideas and established new collaborations for the Duldig Studio.

The Duldig Studio inspires creativity. It is with this aim that the Duldig team set about increasing opportunities for holiday programs, sculpture classes and drawing classes. We thank Jess Murray, Stefan Damschke, our sculptor-in-residence, and Helene Oberman, artist, for creating encouraging and fun environments for both children and adults.

Our Annual Appeal held throughout May and June was a wonderful way to connect with so many of the Duldig Studio's loyal and kind supporters. It is reassuring that we are delivering excellence in our programming and that our donors are joining us in supporting our future. We were thrilled this year many new donors that contributed to building our sustainability.

In every museum the collection is the engine driver of all programming. Melinda Mockridge and Stefan Damschke manage the Duldig collection with depth of learning and professionalism. This year Melinda completed the digitisation of the 'honeymoon series' of photos – adding 350 images to the collection. Benefits of the project include further insights into the influences on Karl and Slawa's work, identification of photographs by Mark Strizic, and better documentation of Karl's own photographic activities and interests. Completion of the project will include making these photos accessible online as an album. We are grateful for support from the Public Record Office Victoria to deliver this project. During the year a number of significant working drawings for commissions which had been left 'in situ' in the artists' studio were replaced by facsimiles – the originals carefully stored for future research and preservation.

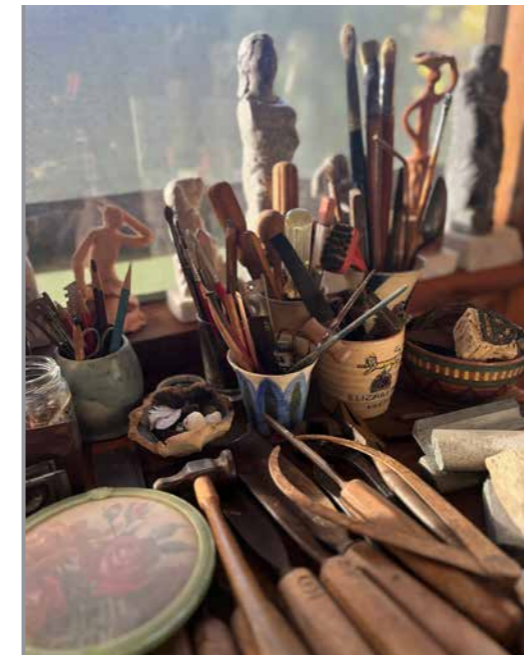
Above all the most rewarding impact of our activities is to welcome the increasing number of visitors including the member for Higgins Dr Michelle Amadna-Raja. It is wonderful to welcome individuals, schools and groups for tours and plum-cake morning and afternoon teas. Every visitor leaves with a deeper understanding

of the importance of being open-minded, empathetic and creative. The history of the Duldig family is as relevant as ever. At the close of this year we were successful in achieving a significant grant from the Vera Moore Foundation to develop education programs for Victorian students in years 9/10 studying the compulsory unit of Holocaust Studies, and also a Community Grant from the City of Stonnington to deliver sculpture programs in aged care – bringing opportunities to be creative to those with the least access to the arts.

I look forward to reporting on these programs in our next Annual Report.

Our annual on-site program 'Opening Duldig Studio - People.Art. Action' is also generously supported by the City of Stonnington and their support is greatly appreciated.

KATE PRINSLEY  
Museum Manager



Images  
From left to right, top to bottom:

Detail of Karl's tools in the Sunroom

Dr Michelle Ananda-Raja (Member for Higgins), Kate Prinsley (Museum Manager) and Eva de Jong Duldig (Founder)

Kate Prinsley (Museum Manager) meeting guests at Annual Family Umbrella Day event





Images  
From left to right, top to  
bottom:

Children enjoying a school  
holiday clay workshop

Helen Liu Jue (Volunteer)  
showing the Chinese  
Cabinet

Nina Hansen (Volunteer),  
Melinda Mockridge  
(Curatorial & Research  
Associate) and Gina  
Panebianco (Vice  
President)

Jess Murray (Programs &  
Marketing Coordinator),  
Andy Hansen (Volunteer)  
Wendy Hughes Chuck  
(Volunteer Coordinator)

New lighting in the  
Sculpture Garden



## VOLUNTEER COORDINATOR'S REPORT

Wendy Hughes Chuck



Volunteers continued to introduce the exhibition *The Studio of Karl Duldig – A Living Legacy* and to lead twice-weekly guided tours into the Heritage Rooms, the Sculpture Garden and the Artists' Studio in the garden.

In addition to maintaining a presence during regular Open Studio hours, volunteers participated in monthly special events such as the popular booked group tours where an Austrian tea is served, clay modelling classes for children and adults, and kids' holiday workshops.

Guides and volunteers were actively involved in the series of Artists' Talks given by print artists whose work was exhibited in a collaboration with the Firestation Print Studio. We provided attendees with short tours of the Heritage Rooms, Sculpture Garden and Studio, and handled sales of prints, books and other merchandise. Our volunteers also assisted at special events such as World Umbrella Day and Mother's Day teas.

Most of our volunteers are trained guides, adjusting their tours to meet the requirements of different groups such as artists, collectors, family groups, overseas visitors, and community representatives. This year, we have developed a tour in Mandarin targeting the many Mandarin speakers resident in Melbourne. We continue to develop contacts within the local Chinese community. The tours are led by Mandarin-speaking volunteer, Helena Liu Jue.

Coordination of the volunteers' monthly rosters was taken over very efficiently earlier in the year by Programs & Marketing Coordinator, Jess Murray. The Studio continues to actively seek additional volunteers and potential guides, so please talk with any of our friendly team if you would like to know more about this opportunity.

I was honoured to receive the 2022 Stonnington Volunteer Award in the Arts and Culture category which recognises volunteers

who support the creative sector, and who make an outstanding contribution to local arts. A win in this category was a very pleasing recognition of the tireless and dedicated commitment of all our volunteers, and also showcased the Studio to Council and the community.

The volunteer cohort continues to be an essential part of the Studio's ability to engage and interact with the community. I thank them all for their wonderful support, and look forward to personally welcoming many more visitors in the year ahead.

**WENDY HUGHES CHUCK**  
Volunteer Coordinator

### VOLUNTEERS

- |                |                    |
|----------------|--------------------|
| Andrew Dixon   | Melinda Mockridge  |
| Angela James   | Michelle Glanville |
| Andy Hansen    | Moli Carew         |
| Blake Randall  | Natalie Senior     |
| Faye Pattinson | Nina Hansen        |
| Gail Ryan      | Sam Phillips       |
| Helena Liu Jue | Wendy Hughes Chuck |
| Janet Arndt    |                    |



Images  
From left to right, top to bottom:

Participants having fun at a Sunday Adult sculpture workshop

Children enjoying the Sculpture Garden during a school holiday workshop

Visitors admiring 'Lest we forget', Karl Duldig 1972, bronze

Ikebana demonstration by artist and teacher Aileen Duke with vessel by Karl Duldig

Glass artist Nadine Keegan discussing her practice and inspirations.

Long-time volunteer and supporter Faye Pattinson celebrating her 90th birthday with the Duldig team.

Stefan Damschke (Collection & Facilities Manager) helping sculptors during a Sunday workshop.



## DULDIG STUDIO ACTIVITIES 2022 – 2023

### Events

- Open House Melbourne - speed date a work of art - FREE
- *Driftwood - The Musical* 2023 Season opening night \*\*
- Fundraising Launch - Turn on the lights
- New supporters gatherings x 2
- Launch, Opening and Closing events for Firestation Print Studio collaborative exhibition *Collection Reflections*

### Public Programs

- Senior Festival tours
- Art Immersion Day - Past is Present with MUMA \*
- Founder's talk and 20th Anniversary celebration - *My father's Sculpture Garden*
- Annual Duldig Lecture on Sculpture: Dr Shawn Sobers \*
- Umbrella Day Family Open Day - FREE
- Sunday Artists' Talks x 9
- Wednesday late night openings and Artists' Talks x 3
- Mothers' Day tea x 2

### Workshops and Tours

- Clay workshop for adults and children
- Group tours x 11
- Modelling in clay children's workshop x 3
- Open Studio Sundays x 3
- School holiday programs x 3
- Tour in Mandarin

### VIP Visits

- *Driftwood - The Musical* cast, designer, director x 3
- Senior staff from City of Stonnington Council
- Dr Michelle Ananda-Raja MP for Higgins

### Education

- Textures in Time clay workshops
  - Windsor Primary School workshop \*\*
- Museum Studies students' tours x 2
  - RMIT Museum Studies \*
  - Deakin University
- VCE Arts' Industry classes x 8
  - Siena College
  - Melbourne Girls' College
  - Westall Secondary College
  - Camberwell High School

### Board, Staff and Volunteers

- Annual General Meeting
- End of year gathering
- Strategy Planning Day x 2
- Volunteer orientation and training x 2
- Volunteer reciprocal Boyd House visit
- EOFY Fundraising Campaign \*

\* Activity conducted online  
\*\* Activity conducted offsite



Attendees at the 'Past is Present' art immersion day enjoying an exclusive viewing of Renee So: 'Provenance' exhibition at MUMA with Curator Melissa Ratliff



Eva de Jong-Duldig (Founder & Patron) with Firestation Print Studio Director Liz McDowell at the opening of the 'Collection Reflections' exhibition.

## FOUNDER'S MESSAGE

Eva de Jong-Duldig



### COMING OF AGE

The Duldig Studio is a house museum of national significance, but it is also much more than this. It is a place where children can draw cats, model clay monsters and decorate a foldable umbrella. It is a place where their parents can learn about carving in stone and wood, casting in plaster and bronze, and decorating a ceramic bowl. It is a place where students can see 20th century modernist fine art and design firsthand. It is a place full of stories – some dramatic, some poignant and all heart-warming. The Duldig Studio is all of these things and for more than 20 years it has educated and touched the hearts of thousands and contributed to the local, national and international understanding of art, social history and culture.

In reviewing this year's activities two outstanding programs spring to mind, both initiated and organised by esteemed Board Members Gina Panebianco and Janine Kibblewhite. The Symposium Past is Present, funded by the Gordon Darling Foundation, was held at both MUMA and the Duldig Studio. And secondly, the exhibition Collection Reflections, a collaboration with 24 artists from the Firestation Print Studio, twelve of whom delivered inspiring Artists' Talks. Both programs offered contemporary artists a new platform for their art, and audiences a rare opportunity to better understand the creative process and connect with the timelessness of my parents' lives and art.

Among other highlights the 2022 Duldig Lecture on Sculpture was delivered by Dr Shawn Sobers, Professor of Cultural Interdisciplinary Practice and convenor of the Critical Race and Culture Research Group at University of the West of England (UWE). Dr Sobers spoke about 'Material culture and the echoes and legacies of transatlantic enslavement - before and after the Colston statue'. A controversial subject which was delivered

online and generated interest from many Australian as well as international participants.

At our end of year function in December 2022 I shared my memories of my father's vision and early beginnings of the museum's Sculpture Garden and had the pleasure of launching a dedicated interpretive brochure. This brochure, together with the installation of spotlights for night viewing, have increased opportunities for the public to enjoy this idyllic outdoor space in the middle of urban Malvern East.

The successful 2022 and 2023 productions of 'Driftwood the Musical' at Chapel off Chapel theatre, Prahran, followed by a season in Sydney in June 2023 have increased interest in the museum and the number of visitors has largely recovered to pre-covid levels. Among special visitors were the Oishi family from Japan. They visited the Duldig Studio to donate Karl's portrait bust of Kimiko Oishi which was commissioned by them in 1985. During their visit in June Takahiro and Kimiko Oishi said 'We were very impressed that the Duldig Studio is beautifully maintained by you and the dedicated supporting people. Now we are convinced that the museum is the right place to keep Kimiko's bust. We are so happy.' Our wonderful team of guides led by Volunteer Coordinator Wendy Hughes Chuck add further enrichment to the visitor experience. We were all thrilled when Wendy was awarded the 2022 Stonnington Volunteer Award in the Arts and Culture category which also raised the profile of the museum to the wider Stonnington community.

I would also like to acknowledge the work of Stefan Damschke (Collection & Facilities Manager) and Melinda Mockridge (Curatorial & Research Associate). Working quietly behind the

scenes they undertake valuable documentation, interpretation and conservation work which is largely not seen or perhaps appreciated by the general public. Among other achievements a large group of archival photographs have been digitised to expand public access and new facsimiles have replaced the original drawings in the Artists' Studio.

This year has been a year of transition with leadership changes on the Board and also among the staff. Our Vice President Gina Panebianco and Board Member Janine Kibblewhite stepped up to lead the organisation while the museum was recruiting a new Museum Manager. During this period Gina and Janine not only ran the day to day operations of the museum, but also initiated and developed key educational and exhibition programs. Immediate Past President, Antony de Jong, with Trevor Ryan and previous members of the Finance & Planning subcommittee, together with Bookkeeper Jane Tidsal, have ensured that the Duldig Studio maintains a healthy and sustainable financial future. Angela James (Secretary) and Andrew Dixon (Board Member) add their expertise and commitment to the Exhibitions & Collection and Marketing & Development subcommittees and like all members

of the Board undertake many other commitments on an ongoing basis.

Incoming Museum Manager Kate Prinsley and Jess Murray (Programs & Marketing Coordinator), have established an excellent rapport with other museum personnel and their contribution to the vibrant and successful operations and management of the museum is making a significant impact. I wish them ongoing success.

The 'coming of age' of the Duldig Studio is an achievement worthy of note and it is timely to take this opportunity to congratulate all past and present members of the Board, staff and volunteers on reaching this milestone and I sincerely thank everybody involved for 'inspiring creative journeys' and making it all happen.

EVA DE JONG-DULDIG  
Founder and Patron



Images  
From left to right, top to bottom:  
Eva de Jong-Duldig (Founder) with members of the Oishi family accepting their donation of 'Kimiko', Karl's portrait of Mrs Oishi.

Eva de Jong-Duldig with Firestation Print Studio artist Sue Martin's response to Karl's Dancing Figures, 1976, Bronze  
Guests enjoying the Founders Talk in the Sculpture Garden, 'My Father's Sculpture Garden' Dec 2022



## BOARD OF MANAGEMENT REPORT

The Board has pleasure in submitting the following Management Report for the year ended 30 June 2023.

### Board Members

The names of the Board Members and Office Bearers who served during the year are:

- Janine Kibblewhite (President (from 3 Nov 2022)
- Gina Panebianco (Vice President from Oct 2016)
- Trevor Ryan (Treasurer to 25 Oct 2022)
- Antony de Jong (President to 3 Nov 2022 and Treasurer from 3 Nov 2022)
- Angela James (Secretary from 3 Nov 2022)
- Andrew Dixon (Secretary to 3 Nov 2022)
- Georgina Walker (Board Member to 25 Oct 2022)

### Principal Activity

The principal activity of the organisation was the operation of a not-for-profit public museum and art gallery.

### Results

In the full year of operation to 30 June 2023, the organisation's surplus from activities was \$113,355 and its net assets as at 30 June 2023 were \$3,707,792. Further details are contained in the financial

performance summary and the Duldig Gallery Inc Financial Reports.

The income of the organisation is exempt from Income Tax as it is endorsed as a Deductible Gift Recipient (DGR), and as an Income Tax Exempt Charity (ITEC).

### Review of Operations

During the year the organisation supported arts events, public programs, workshops, visitors and group tours. Education activities involved local primary schools, VCE Art students and Tertiary Museum Studies students. Public programs were delivered online, at the Duldig Studio and at offsite locations and included the annual Duldig lecture, and Art Immersion Day in conjunction with Monash University Museum of Art. Further details are contained in the Studio Activities summary.

### Board Members' Benefits

During or since the end of the financial year ended 30 June 2023, no office bearer or Board member or any related company of an office bearer or Board member, has received or become entitled to receive a benefit through a contract or other arrangement, without prior disclosure and authorisation from the Board and full disclosure in the Financial Report.

### MEETINGS OF BOARD MEMBERS

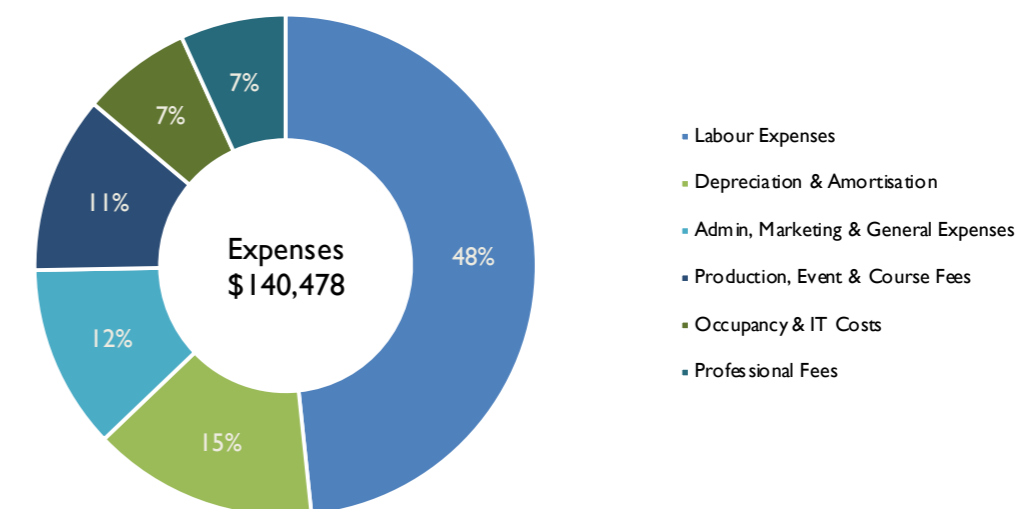
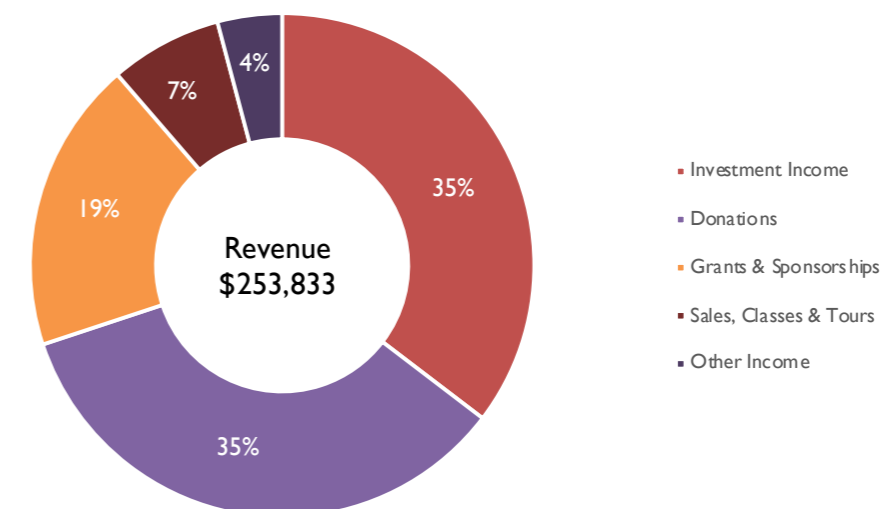
During the financial year six Board meetings were held. Attendances were:

	Meetings Eligible to Attend	Meetings Attended
Janine Kibblewhite	6	6
Gina Panebianco	6	6
Antony de Jong	6	6
Angela James	6	6
Andrew Dixon	6	3
Trevor Ryan <sup>1</sup>	2	1
Georgina Walker <sup>2</sup>	2	2
Kate Prinsley (Museum Manager) <sup>3</sup>	3	3
Eva de Jong-Duldig (Founder & Patron)	6	6

Notes:

- 1) Trevor Ryan retired from the Board in October 2022.
- 2) Georgina Walker retired from the Board in October 2022.
- 3) Kate Prinsley joined the organisation in December 2022.

## FINANCIAL PERFORMANCE SUMMARY



NOTE: Financial Report available on request.

## INFORMATION ON OFFICE BEARERS AND BOARD MEMBERS



**Janine Kibblewhite**  
**B.Sc. Hons (Melb)**

*President since November 2022, Board member and Chair of the Marketing & Development subcommittee since October 2016.*

Janine has 25 years of sales and strategic marketing experience in the private sector in the US and Australia. Her volunteer activities include mentoring with Australian Migration Employment Services and providing marketing support to Creativity Australia, and other community based organisations. Janine is a watercolour artist, enjoys helping others discover the joy of creation and has extensive experience motivating and inspiring remote teams of all ages.



**Antony de Jong**  
**LL.B. (Hons), B.Sc. (Melb), M.B.A. (Wharton), GAICD**

*Founding Board Member and President 2002 - October 2022, Treasurer and Chair of the Finance, Risk & Planning subcommittee since October 2022.*

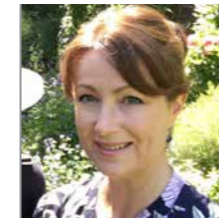
Antony has over 30 years' international and Australian experience in advisory, CEO and line management roles. He is the former Chief Executive of the Business & Consumer division of Vocus Group, where he led Commander, Dodo and iPrimus telecommunications and energy businesses. During his executive career, Antony also held leadership roles at Telstra, Belong, and Accenture, and other non-executive Board roles in the not-for-profit sector, including over a decade on the Board of the Bell Shakespeare Company.



**Gina Panebianco**  
**B.Ed (Melb), H.D.T. (SAC) (Melb)**

*Board Member since October 2014, Vice President since October 2016 and Chair of the Exhibitions & Collection subcommittee since 2020.*

Gina is an art educator with 30+ years' experience in the research, development, delivery and evaluation of learning programs, education resources and audience engagement. Gina is the former Head of Education and Programs at the National Gallery of Victoria and has held a diversity of roles in the visual arts and lifelong learning, including, Education Advisor for Dialogue in the Dark, Melbourne; Education State Arts Assessor for the Victorian Curriculum and Assessment Authority; Visual Arts Educator at La Trobe University; and guest educator in museums and galleries in Singapore, Taiwan, USA and Japan.



**Angela James**  
**B.Bus (Massey), PGDip Bus&Admin (Massey), GDip Art History (Melb)**

*Board member since October 2020, Secretary since October 2022.*

Angela has an extensive background in project and administrative support across a range of government, corporate and community organisations, including the National Gallery of Victoria, and currently works in local government.



**Trevor Ryan**  
**B. Bus. (Swinburne) FCPA**

*Board member, Treasurer and Chair of the Finance, Risk & Planning subcommittee October 2016 - October 2022.*

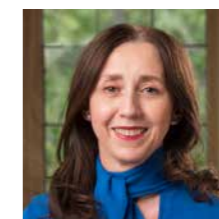
Trevor is currently semi-retired after 40 years working in the Finance profession. He was previously a senior member of the Telstra Corporation Finance group working in various Finance and Commercial roles. He has held various finance-related positions in the not-for-profit, retail and energy sectors.



**Andrew Dixon**  
**B. Soc. Sci. (Librarianship), Grad. Dip. (Data Processing) RMIT, AALIA**

*Board member since June 2010, Secretary October 2016 - October 2022.*

Andrew is a foundation member of the Ambassadors group at The W. R. Johnston Collection and President at Villa Alba Museum in Kew. He is Vice President of the Friends of Labassa, a National Trust historic mansion in Caulfield North.



**Georgina Walker**  
**BArts (FinArt) (RMIT), PGDipArts (ArtCurSt) (Melb), MA (ArtCur) (Melb), PhD (Melb)**

*Board member October 2019 - October 2022*

Georgina is a Teaching Associate in Art History and Curatorship at the University of Melbourne and teaches in Art History, Curatorial and Museum Studies. Her research and publications connect the rising popularity of private museums with evolving models of collecting and philanthropy, and new interrelationships between private and public museums.

*Images  
From left to right*

*All set for a Viennese Morning tea*

*Angela James (Secretary) and Andy Hansen (Volunteer) with guests in the Sculpture Garden*



## DONORS

Thank you to our private donors for your generous support.

<p><b>\$10,000+</b>                  Antony de Jong                  Eva de Jong-Duldig                  Stuart Leslie Foundation</p> <p><b>\$5,000+</b>                  Alison Inglis                  Pieter de Jong</p> <p><b>\$1000+</b>                  Andrew Dixon                  Andrew Sisson                  Janet Arndt                  Janine Kibblewhite</p>	<p><b>\$500+</b>                  Anonymous(2)                  Elizabeth Morgan                  Kimiko &amp; Takahiro Oishi                  Marigold Southey                  Wendy Hughes Chuck</p> <p><b>\$100+</b>                  Anonymous(2)                  Andrew Goodman                  Angela &amp; Andrew Wood                  Bill &amp; Julie Perrin                  Daniel Duldig                  Eve Lustig                  Gail Ryan</p>	<p>Geoffrey Edwards                  Georgina Walker                  Gina Panebianco                  Harry Kras                  Helen Liu Jue                  Helen Loersch                  Jenny Port                  Lyndel Wischer                  Margaret Adamson                  Margaret Legge                  Maureen &amp; Russell Pratt                  Moli Carew                  Paul &amp; Pat McCulloch                  Raphael &amp; Kerryn Arndt - Lowe</p>
---	---	---

## FOUNDING PATRON

Eva de Jong-Duldig

## LIFE MEMBERS

Thank you to our Life Members who have served more than 10 years on our Board of Management and continue to provide support and guidance to the Duldig Studio.

Alison Inglis AO  
 Andrew Harvey  
 Bronwyn Hughes AO  
 Debra Cherry  
 Harry Kras

## BEQUESTS

A bequest to the Duldig Studio is a generous way of securing the museum for the benefit of future generations. Bequests of any size are most welcome and will help us to continue to provide access, understanding and enjoyment of the Duldig Studio collection and inspiring creative Journeys. If you would like to discuss making a bequest please contact Kate Prinsley, Museum Manager or a member of our Board.

## FUNDING PARTNERS



## COMMUNITY PARTNERS & SUPPORTERS



## INDUSTRY PARTNERS



2023 Annual Report photography:  
 Duldig Archives, Staff, Volunteers and Board Members.

Duldig Studio is Fully Accredited by Museums Australia (Victoria) under its Museums Accreditation Program (MAP), is an Australian Registered Charity and a member of the Public Galleries Association of Victoria (PGAV) as well as Australian Museums and Galleries Association Victoria (AMaGA Victoria).



museum + sculpture garden

**Address**

92 Burke Rd  
Malvern East VIC 3145  
Australia

**Phone**

+61 3 9885 3358

**Email**

[enquiries@duldig.org.au](mailto:enquiries@duldig.org.au)

**Website**

[www.duldig.org.au](http://www.duldig.org.au)

**Facebook**

[@duldigstudio](https://www.facebook.com/duldigstudio)

**Instagram**

[@duldigstudio](https://www.instagram.com/duldigstudio)