



PUBLIC WORKS OF ART

KARL DULDIG

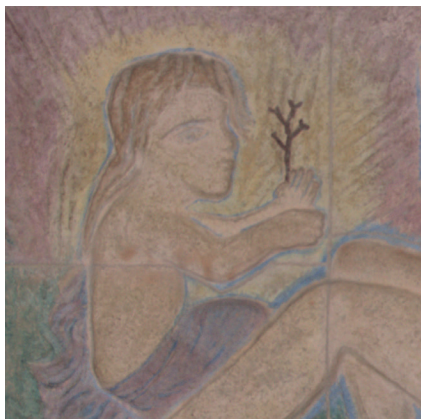
■ (1902 - 1986) ■

A GUIDE TO SITES AROUND MELBOURNE



**DULDIG
STUDIO**

museum + sculpture garden



THE FAMILY 1957 (detail)
ceramic bas-relief
68.5 x 170 cm
City of Glen Eira collection

In this stylised composition, a small child holds a 'tree of life' adjacent to an embracing couple. Originally commissioned in 1957 by Mr and Mrs Fred Winton for their home in Brighton, this work was conceived by the artist to symbolise the Winton family. The couple had one child, a daughter. The Winton home was purchased by the Sutton family, who removed the sculpture from the living room and in 1991, donated it to the City of Caulfield.

CAULFIELD

City of Glen Eira Municipal Offices



ADAM AND EVE 1957 (detail)
ceramic bas-relief
150 x 200 cm (irregular)
City of Glen Eira collection

Karl Duldig was often attracted to biblical themes and the 'Adam and Eve' subject appears often in his drawings, ceramics and sculptures. In this highly resolved work the freeform outline clearly reflects the modelled forms. 'Stanmark', a popular reception centre in Inkerman Road, East St Kilda, commissioned this relief for their main ballroom in 1957. In 1975 this property became the Caulfield Arts Centre. When the Centre was sold the relief was dismantled and in 1991 it was re-installed in the Glen Eira Municipal Offices.

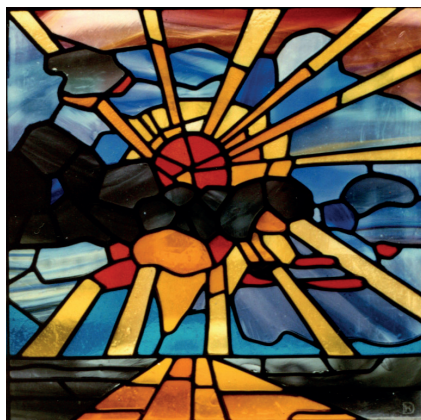
Cover image: KORE, 1976
bronze (cast 2016), h 90 cm
City of Stonnington collection

MALVERN EAST

Central Park, Cnr. Burke Road &
Wattletree Road, Malvern East

The kneeling female figure was a favourite subject of the artist throughout his

career. Originally modelled in clay Koré (1976) was the first significant sculpture completed by Karl after the passing of his wife, Slawa, in August 1975. The first bronze cast was commissioned by the City of Caulfield in 1977 (stolen 2013). Subsequently the City of Stonnington commissioned and installed this posthumous cast in the gardens of Central Park in 2016.



STAINED GLASS WINDOWS, 1972
The Sun Appearing through Dark Clouds
 One of six stained glass memorial windows
 Each 54 cm x 54 cm

"The six stained glass panels in the Memorial Hall are devoted to the memory of our people who lost their lives as victims of Nazi persecution. They also express the feeling of hope for the future."

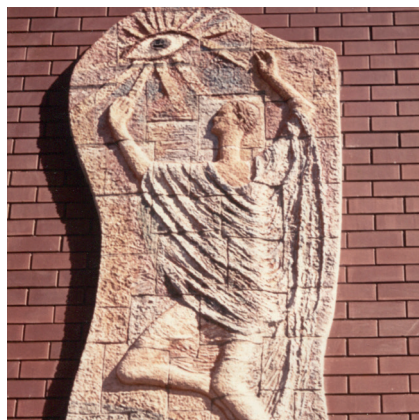
Poet & Muse

Two stained glass windows
 Each 345 cm x 43 cm

"The two panels in the main Hall ... are symbolic of the cultural and artistic activities of the Kadimah."

Karl and Slawa Duldig, original notes,
 Duldig Studio collection

All the windows use vibrant high quality 'Antique' (mouth-blown) glass and lead cames and were designed as an integral part of the building when it was built in 1972.



THE GREAT AWAKENING, 1972
 (detail)
 Ceramic bas-relief
 Approx. 3 m x 1.2 m (irregular)

The Great Awakening was the last of Karl Duldig's architectural bas-reliefs. It is also the only extant public mural by the artist in its original location. Modelled in high relief as a feature of the façade of the Kadimah in 1972, its free-form outline, symbolism and content demonstrate the artist's skills and heralded a mature confidence and vitality in his sculptural practice.

"The physical and spiritual representation of man—earthbound aspiring towards the infinite."

Karl and Slawa Duldig, original notes,
 Duldig Studio collection

Kadimah Jewish Cultural Centre collection
 Classified by the National Trust (Vic)

ELSTERNWICK

Kadimah Jewish Cultural Centre, 7 Selwyn St, Elsternwick

Stained glass windows located in the first floor lobby & auditorium.

(Interior viewing by appointment)

Bas-relief located on the building facade



WESTERN WALL 1969 (detail)
Melbourne Hebrew Congregation
collection
stained glass, 120 x 100 cm approx.

Although modern in design, the Western Wall of the ancient Jewish temple in Jerusalem is nevertheless immediately recognisable. The window was commissioned in 1969 by Rabbi Rapaport to commemorate his parents and it was the first stained glass window completed by the artist. Karl's wife, Slawa Horowitz-Duldig, assisted him in the selection of vibrant high quality 'Antique' (mouth-blown) glass and the window was constructed by Yencken Glass Industries.

SOUTH YARRA
Melbourne Hebrew Congregation
Cnr Toorak Rd & Arnold St Sth Yarra



MONUMENT TO RAOUL WALLENBERG, 1985
bronze, basalt, granite, sandstone
250 x 300 x 150 cm
City of Booroodara collection
Classified by the National Trust (Vic)

Unveiled by the Swedish Ambassador in January 1985 this Monument to Raoul Wallenberg was the first erected in the world and according to Google has 'importance as a work of artistic excellence'. It was also the artist's last commission. The cairn of stones symbolises the destruction of European Jewry in the Holocaust. The bronze head of Wallenberg surmounts the base and commemorates the herosim of Wallenberg who saved many thousands of Jewish people in Budapest during the 2nd World War to herald a period of peace.

KEW
Wallenberg Gardens
Cnr Princes & High St Kew



CARLTON WAR MEMORIAL 1962
(detail)
bronze bas-relief
63 x 110 cm
Jewish Community Council collection

... absolutely magnificent from many points of view; the delicacy of the casting which produces the finest detail absolutely perfectly; in concept, in what could have been grotesque, tortured and ugly, is full of the tragic beauty and redolent of hope, and magnificent in design. ... here, held for eternity in bronze is the story of Jewish survival; hope and faith in the very abyss of terror.
Pamela Ruskin AJN 19 April, 1963.



AUSTRALIA TODAY AND TOMORROW 1970 (detail)
hand-beaten copper on steel grid
240 x 300 cm
City of Melbourne Art and Heritage collection

This unusual relief is nevertheless a hallmark of Karl Duldig's work; although part of the modernist tradition, Karl's sculptures often took on a figurative form. The work consists of fragmented geometric, abstract and figurative forms in beaten, moulded and crumpled copper and suspended in relief from a steel grid. In 1970 the businessman Henry Krongold commissioned the work for his city office building. The building was later sold to Melbourne City Council and the artwork was transferred with the land title.

PARKVILLE

Melbourne General Cemetery
College Crescent, Parkville

MELBOURNE

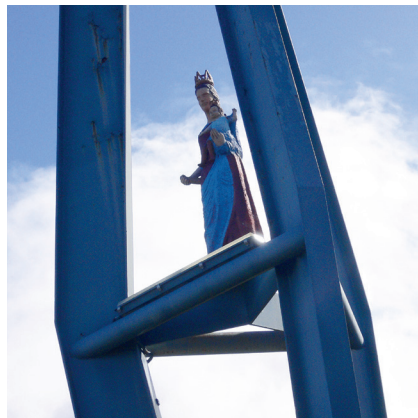
Council House I (entrance)
200 Lt. Collins St Melbourne



ABSTRACT SYMBOL c 1970

Collection: Elwood Talmud Torah
hand-beaten copper
300 cm diameter

This 'abstract symbol' was inspired by the six-pointed Star of David. Working in copper for the first time the artist created a macquette which is in the collection of the Duldig Studio in East Malvern. The macquette was then scaled up by three and installed in front of a light blue tile background to provide a focal point for the façade of the synagogue in 1970.



BRICKYARD MADONNA 1964

Terracotta
186 cm

Modelled in clay without an armature this Madonna and Child sculpture is possibly the largest one-piece terracotta figure in Australia. Too large for the sculptor's kiln it was taken to the local brickworks for firing and was pictured among the bricks in the Sun, November 1964. The sculpture is installed high on the adjacent steeple of St Mary's Church in Altona. (The drapery has subsequently been painted light blue.)

ELWOOD

Elwood Talmud Torah (facade)
39 Dickens St, Elwood

ALTONA

St Mary's Church
Cnr Railway St & McBain St, Altona

Produced to coincide with the exhibition
The Studio of Karl Duldig - A Living Legacy
and the 80th anniversary of the arrival of the Duldig family in Australia.